

SUDs system designed as landscape feature. Stone pebble stream with appropriate planting and weirs.

Bands of ornamental shrub and groundcover planting define spaces, provide screening from road and add to visual amenity throughout the space.

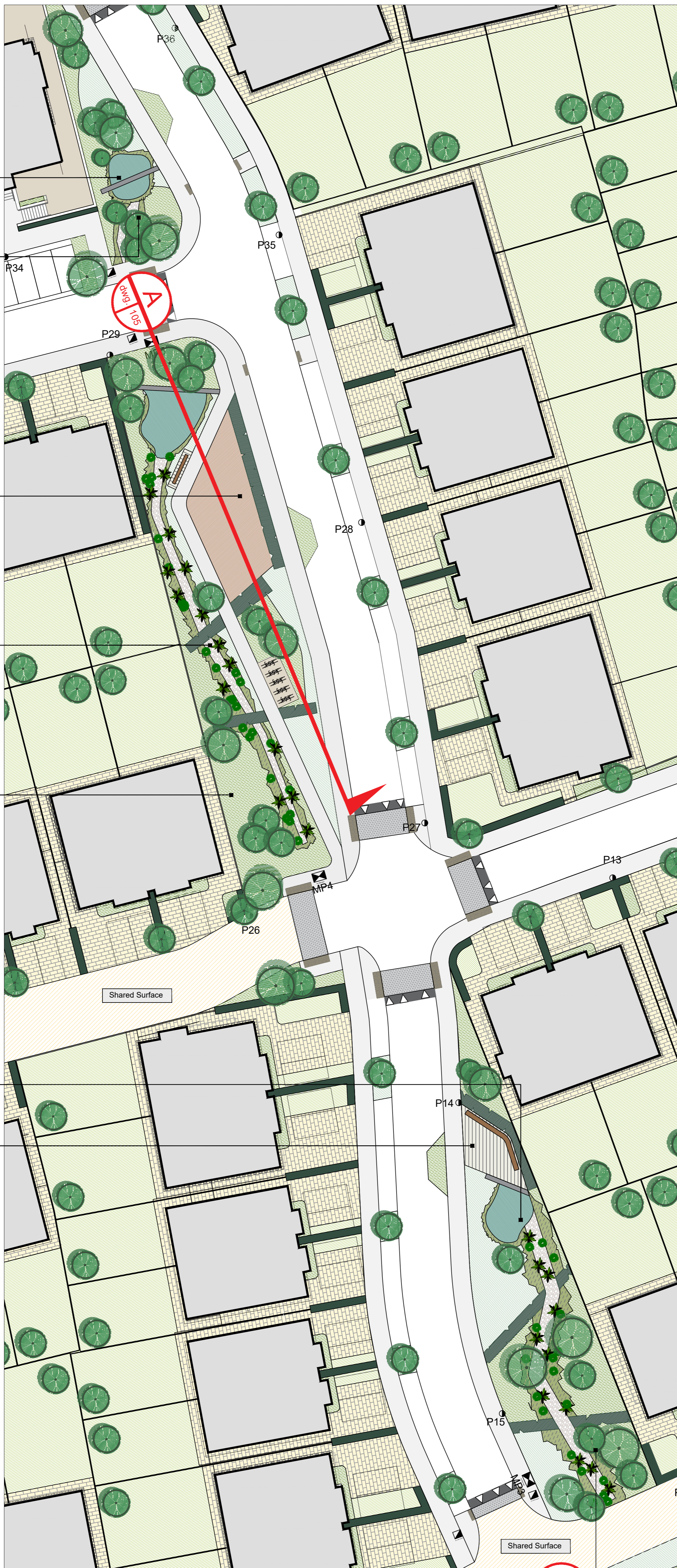
Play area providing for various age groups.

SUDs system designed as landscape feature. Stone pebble stream with appropriate planting and weirs.

Bands of ornamental shrub and groundcover planting define spaces, provide screening from road and add to visual amenity throughout the space.

SUDs system designed as landscape feature. Stone pebble stream with appropriate planting and weirs.

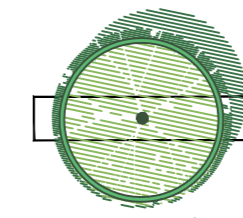
Seating area overlooking open space defined by ornamental planting and feature paving.



Detail Area 1 | 1:250

Bands of ornamental shrub and groundcover planting define spaces, provide screening from road and add to visual amenity throughout the space.

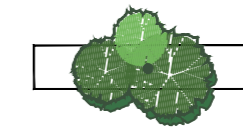
Legend and Proposed Plant List:



Existing Tree
To be protected, retained and incorporated into landscape scheme.

Large Tree Planting
To be planted as 12-14cm g, 14-16cm g and 16-18cm g
To be of the following species:
Aesculus hippocastanum (Horse Chestnut)
Betula pendula (Silver Birch)
Castanea sativa (Sweet Chestnut)
Fagus sylvatica (Beech)
Liquidambar styraciflua 'Worplesdon' (Sweet Gum)
Pinus sylvestris (Scots Pine)
Quercus palustris (Pin Oak)
Quercus rubra (Red Oak)
Quercus robur (Oak)
Tilia platyphyllos (Lime)

Medium Sized Street Tree Planting
To be planted as 12-14cm g
To be of the following species:
Acer x freemanii 'Autumn Blaze' (Freeman Maple)
Alnus spaethii (Spaeth Alder)
Carpinus betulus 'Frans Fontaine' (Hornbeam)
Malus trilobata (Wild Apple)
Pyrus calleryana 'Chanticleer' (Ornamental Pear)
Sorbus aucuparia 'Sheerwater Seedling' (Rowan)
Tilia cordata 'Greenspire' (Lime)



Ornamental Multi-stemmed Tree Planting
To be planted as 2.0-3.0m high, umbrella form
To be of the following species:
Amelanchier lamarkii (Snowy Mespilus)
Corylus avellana (Hazelnut)
Prunus avium 'Plena' (Wild Cherry)
Prunus serrulata 'Kanzan' (Kanzan Cherry)
Pyrus calleryana 'Chanticleer' (Ornamental Pear)



Existing Native Hedgerow Planting
To be retained and enhanced
(Refer to arborists report)



Hedge Planting
To be planted at 900-1200mm high
To be of the following species:
Carpinus betulus (Hornbeam)
Fagus sylvatica (Beech)
Ligustrum ovalifolium (Privet)
Prunus lusitanica (Portuguese Laurel)

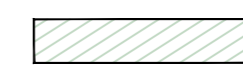


Ornamental Planting
To be selected from the following:

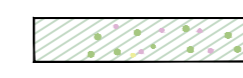
Shrub Planting
(To be planted at 4 per m²)
Abelia x grandiflora
Buxus sempervirens (Box)
Cistus x corbariensis (Rock Rose)
Cornus alba 'Sibirica' (Dogwood)
Cornus alba 'Elegantissima' (Dogwood)
Escallonia 'Apple Blossom'
Fatsia japonica (Japanese Aralia)
Hydrangea paniculata 'Limelight'
Hypericum 'hidcote' (St Johns Wort)
Ilex aquifolium (Holly)
Lavandula angustifolia 'Hidcote' (Lavender)
Mahonia x media 'Charity' (Oregon Grape)
Perovskia atriplicifolia 'Blue Spire' (Russian Sage)
Sarcococca confusa (Sweet Box)
Viburnum tinus 'Eve Price' (Russian Sage)

Groundcover, Fern + Grass Planting
(To be planted at 5 per m²)
Anemone nemorosa
Asplenium scolopendrium
Athyrium filix-femina
Calamagrostis acutiflora 'Karl Foerster'
Carex testacea
Dryopteris filix-mas
Geranium 'Rozanne'
Hedera helix 'Hibernica'
Heilichotrichon sempervirens
Libertia grandiflora
Lonicera pileata
Lonicera nitida 'Maigreen'
Luzula nivea (Snowy Woodrush)
Molinia caerulea 'Moorhexe' (Purple Moor Grass)
Persicaria affinis 'Superba'
Polystichum polypleparum
Sesleria autumnalis
Stipa arundinacea
Stipa gigantea
Stipa tenuissima 'Pony Tails'
Vinca minor (Periwinkle)

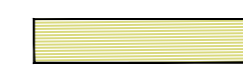
Herbaceous Planting
(To be planted randomly throughout in groups of 3 and 5)
Acanthus spinosus
Achillea 'Moonshine'
Agapanthus africanus
Agapanthus africanus 'Alba'
Anemone japonica 'Honore Jobert' (Windflower)
Arunco dioicus
Crocsmia 'Lucifer'
Echinacea purpurea
Echinops 'Retro Bue'
Helenium 'Moorheim Beauty'
Rudbeckia fulgida 'Goldsturm'
Schizostylis coccinea 'Major'
Verbena bonariensis



Grass Seeding
Managed as an ornamental lawn



Bulb Planting
Bulbs to be planted in groups of 7 and 9
To be selected from following:
Allium spp.
Crocus spp.
Narcissus spp.
Tulipa spp.



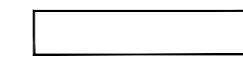
Wildflower



Paving to gardens and access paths
Small unit concrete paving



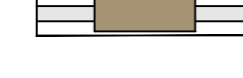
Feature Paving to public spaces
Textured concrete paviors or flags



In-situ Concrete Footpaths



Soft Play Surface
To toddler play areas



Timber Benches



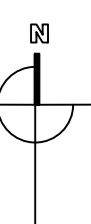
Informal Play Equipment



Formal Play Equipment



Proposed pedestrian/cyclist link



THIS DRAWING IS COPYRIGHT ©
DO NOT SCALE figured dimensions only to be taken from this drawing

Res. Dev. at Cookstown, Enniskerry for Cairn Homes Properties Ltd.	Scales: 1:250 @ A1	Status: PLANNING
Detail Area 1	Date: 5.11.20	Dn: JMcC Ctd: KF
	Job No: 370	Drawing No: 102
		Rev: B
Kevin Fitzpatrick Landscape Architecture		
7 Abbey Business Park Grange Drive Dublin 13 T-00353 (0)1 8326715 E- info@kfla.ie W- www.kfla.ie		

05.11.20	JMcC	Final Planning Issue
23.10.20	JMcC	Issue For Comment
rev	date	drawn description